

School of Environmental and Biological Sciences



WHO WE ARE AND WHAT WE DO

Musical score for 'Who We Are and What We Do'. The score is written for a string quartet and includes dynamic markings such as *f*, *ff*, and *B*. The score is divided into four parts, each starting with a red arrow and the letter 'O'. The first part includes a key signature change to one flat and a dynamic marking of *f*. The second part includes a dynamic marking of *ff*. The third part includes a dynamic marking of *f*. The fourth part includes a dynamic marking of *ff*. The score is written on five staves.



***Chemistry**

***Communication**

Ecology, Evolution and Natural Resources

Environmental & Business Economics

B E
E & N E
F E
F M E

Environmental Planning & Design

E G
E
L A
L

Environmental Policy, Institutions, and Behavior

E H C
H & E
O
E &
E &

Environmental Sciences

A E
E H
E

Exercise Science and Sports Studies

A K
E
E M

Food Science

F
F M E
G F

Genetics

***Geography**

***Geological Sciences**

***Journalism and Media Studies**

Marine Sciences

M B /B O
M
M G
O
D M

Meteorology

Microbiology

Nutritional Sciences

C N
D
F A
N
N F B

Plant Science

H & f
f C
(C)
H)
)

Public Health

** These majors require the completion of a School of Environmental and Biological Sciences minor or certificate program.*

FACULTY

F B
f f B
f f B
O

ACADEMIC ADVISING

E
f
(f

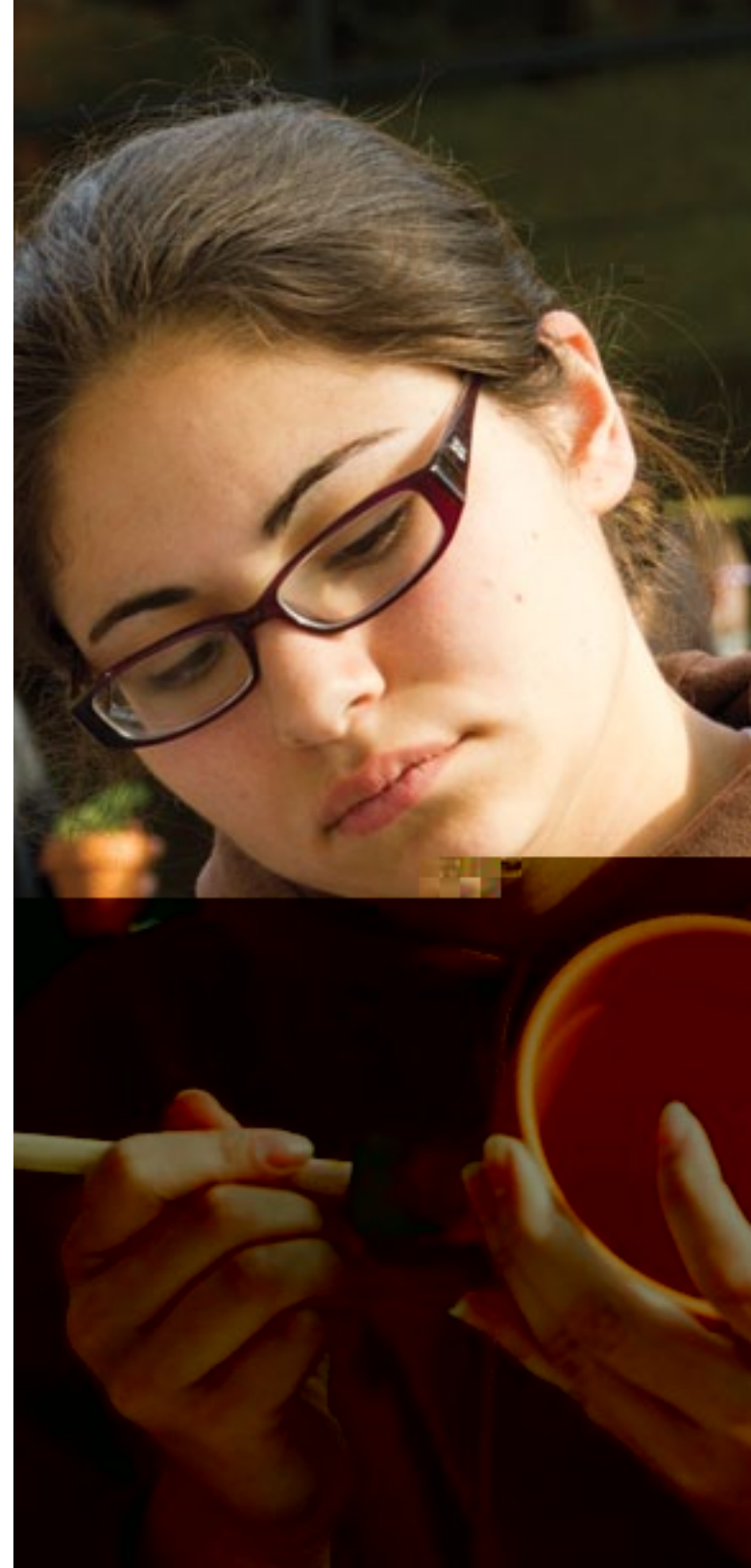
CREDITS REQUIRED FOR GRADUATION

f f ff
C A ; L f ; H
A ; M ; H B E
E C ; O C ; E
f
f 128 f
5- B E B f 159)

EXPERIENCE-BASED EDUCATION

f N (IN)
f B
IN
f
IN sebspin.rutgers.edu

- E
- ▶
- ▶ D
- ▶ G H C



- ▶ studyabroad.rutgers.edu
- ▶ EB (sebs.rutgers.edu/international)
- ▶ A E (aresty.rutgers.edu)
- ▶ F
- ▶ L

HONORS PROGRAMS

1. sebs.rutgers.edu/honors

2. sebs.rutgers.edu/honors :
 1. sebs.rutgers.edu/honors B G () H :
 3.500 (4.000)
) A (C M) 1350,

2. sebs.rutgers.edu/honors B
 G. H. C
 15

3. sebs.rutgers.edu/honors

3. sebs.rutgers.edu/honors

SCIENCE TEACHER EDUCATION

sciencelearning.rutgers.edu
 E
 G E N. J.
 F 848-932-9164

CLUBS AND ORGANIZATIONS

getinvolved.rutgers.edu
 -N. B.
 EB G C D G. (B),
 C E fA F

RECREATION

recreation.rutgers.edu

OFFICE OF SPECIAL PROGRAMS/EOF [EDUCATIONAL OPPORTUNITY FUND]

sebs.rutgers.edu/osp
 Of (O)
 A F

HOUSING

housing.rutgers.edu
 O (rulc.rutgers.edu) (D
 C) F

TUITION AND FEES

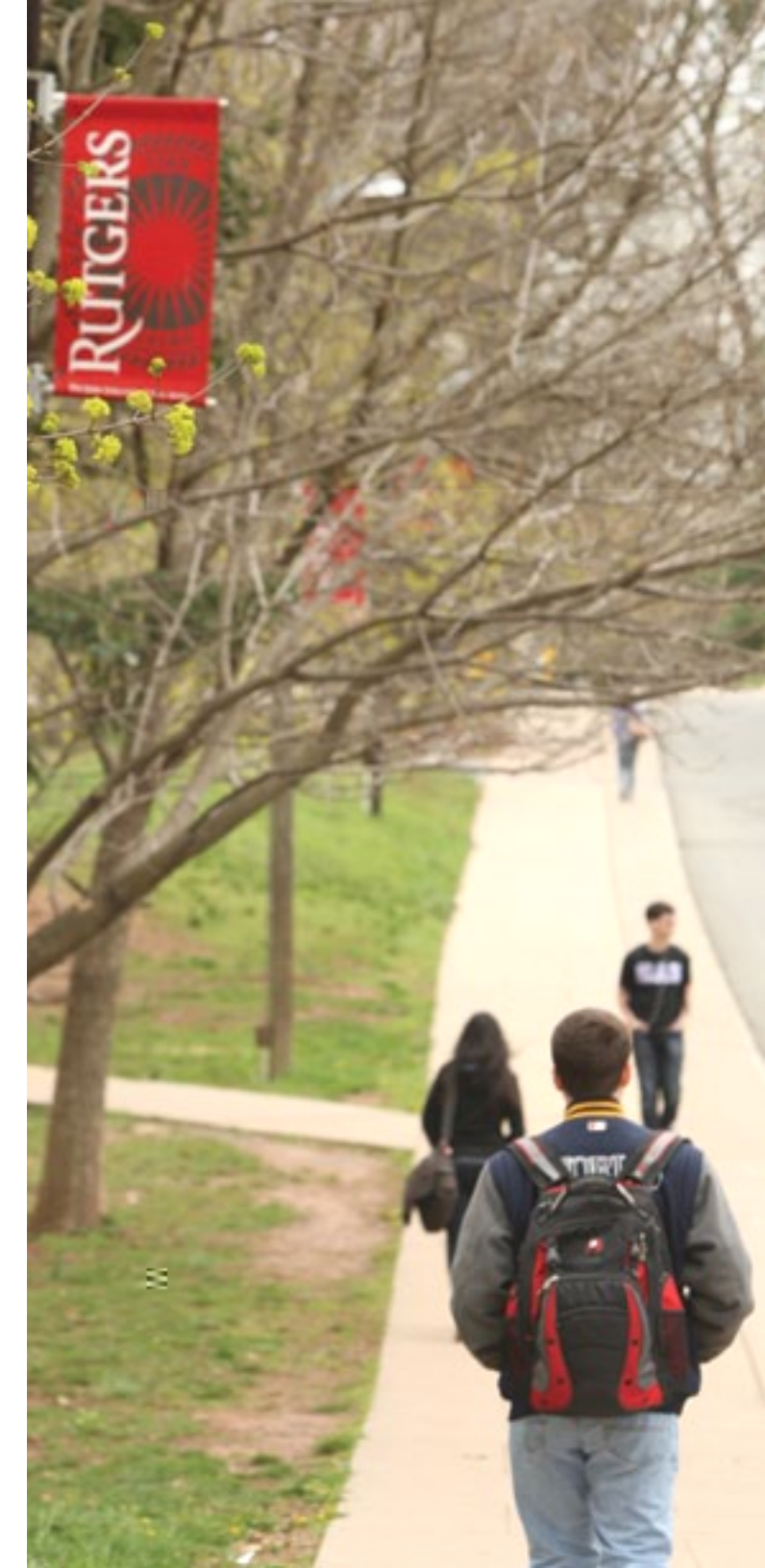
studentabc.rutgers.edu
 F A F

SCHOLARSHIPS AND FINANCIAL AID

studentaid.rutgers.edu
 F A Of (studentaid.rutgers.edu)
 B

studentaid.rutgers.edu

studentaid.rutgers.edu
 E A f E A (FAF A) fafsa.ed.gov
 F sebs.rutgers.edu/sfa



STUDY ABROAD

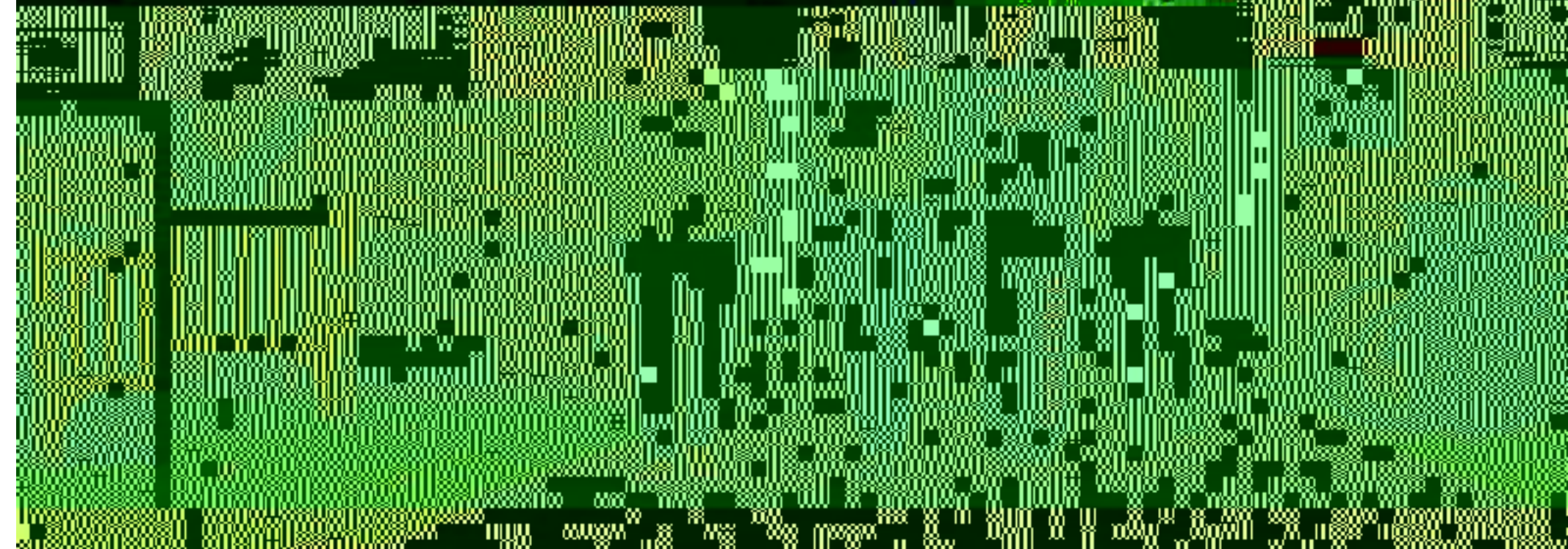
Musical notation for 'STUDY ABROAD' featuring notes and rests on a staff. The notes are G, E, A, and F. Dynamics include *f* and *ff*. The text studyabroad.rutgers.edu and sebs.rutgers.edu/international is overlaid on the notation.

TOURS AND INFORMATION

Musical notation for 'TOURS AND INFORMATION' featuring notes and rests on a staff. The notes are G, H, C, B, and A. Dynamics include *f* and *ff*. The text 848-932-3000 is overlaid on the notation.

OFFICE OF ACADEMIC PROGRAMS

Musical notation for 'OFFICE OF ACADEMIC PROGRAMS' featuring notes and rests on a staff. The notes are B, N, J, and D. Dynamics include *f* and *ff*. The text 88 L, N. B., N. J., 08901-8525, and sebs.rutgers.edu is overlaid on the notation.



ADMISSIONS

Admissions Office
admissions.rutgers.edu

Office of Financial Aid
 65 Denville Avenue, Room 202
 Newark, NJ 07102
 Phone: 973-992-8097

Phone: 732-445-6438
admissions.rutgers.edu

FALL APPLICATION DEADLINES

Fall Enrollment Applications: 11/1
 Fall Financial Aid Applications: 11/1
 Fall Enrollment Applications: 11/1



HELPFUL WEBSITES

- EB Office of Financial Aid: sebs.rutgers.edu
- EB Office of Financial Aid / EOF: sebs.rutgers.edu/osp
- Admissions Office: admissions.rutgers.edu
- Scarlet Knights: scarletknights.com
- Careers Services: careerservices.rutgers.edu
- NBCS: nbc.rutgers.edu/newstudent
- Food: food.rutgers.edu
- Maps: rumaps.rutgers.edu
- Disability Services: disabilityservices.rutgers.edu
- Douglass: douglass.rutgers.edu
- Financial Aid: studentaid.rutgers.edu
- Health Services (CA): rhscaps.rutgers.edu
- Health Services (M): health.rutgers.edu
- Health Services (L): ruoncampus.rutgers.edu
- International Services: internationalservices.rutgers.edu
- RLC: rlc.rutgers.edu
- RLC: rulc.rutgers.edu
- Libraries: libraries.rutgers.edu
- RUDOTS: rudots.rutgers.edu
- OIRAP: oirap.rutgers.edu/testplace.html
- APS: aps.rutgers.edu
- Recreation: recreation.rutgers.edu
- RUCONNECTION: ruconnection.rutgers.edu
- RU EXPRESS: food.rutgers.edu/ru-express
- RUINFO: ruinfo.rutgers.edu
- SEBS: sebs.rutgers.edu/sfa
- STUDENTABC: studentabc.rutgers.edu
- GET INVOLVED: getinvolved.rutgers.edu
- UNDERGRADUATE: undergraduate.rutgers.edu
- ARESTY: aresty.rutgers.edu
- VETERANS AFFAIRS: veteransaffairs.rutgers.edu
- WP: wp.rutgers.edu



10/1/2018

Environmental Science: N... ; 1: (top to bottom) N...
D... H... ;
2: N... ; 3: (top to bottom) D... H... ;
N... ; 4: H... ;
5: (top to bottom) N... ; J... ;
N... ; 6: J... C... ; 7: (top to bottom)
N... (first and second image), J... C... ;
8: J... C... ; 9: (top to bottom) N... ;
(first and second image), J... ; 10: J... ffH...



Office

Environmental Science Building

Office of the President

Mailroom

88 L... D...

New Brunswick, New Jersey 08901

848-932-3000

sebs.rutgers.edu

